

S 46 SX

Truck-mounted concrete pump



| | | |
|----------------------|------|-----------------------|
| Vertical reach | | 45.6 m |
| Concrete output | max. | 162 m ³ /h |
| Pressure on concrete | max. | 85 bar |

MADE IN GERMANY
by SCHWING-Stetter 



RECORD BREAKING ENGINEERING

SCHWING GmbH
Heerstrasse 9-27
44653 Herne, Germ,any
Phone +98 021 - 224 286 75-8
Fax +98 021 - 224 286 78
@mr.pump_iran
www.saghargostar-co.ir

The S 46 SX from SCHWING

Proven reliability

With its robust design and proven concrete pumping technology, the S 46 SX from SCHWING stands since many years for reliability, long service life and excellent value retention. The open hydraulic system makes it possible to achieve an energy-saving engine speed of just over 1,000 U/min for customary delivery rates. In combination with the legendary robustness of the ROCK concrete valve, the operating and maintenance costs remain low and the revenue high. The lowest space requirement in this class when supporting makes erection possible even on the most restricted construction sites. The S 46 SX from SCHWING: Reliability and efficiency at the highest level.

Boom

Thanks to the overhead roll-folding, the boom of the S 46 SX can be set up during operation in a very short time because the time-consuming swivelling is no longer applicable. On the other hand, the service life of the boom is long thanks to its proven and robust construction.



Pump kit

Only the SX outriggers by SCHWING allows the longstroke pump kit P2525 with 2.50 m long pumping cylinders to be used in this class of machine. Advantage: 15% less strokes than with pump kits otherwise available in this class.

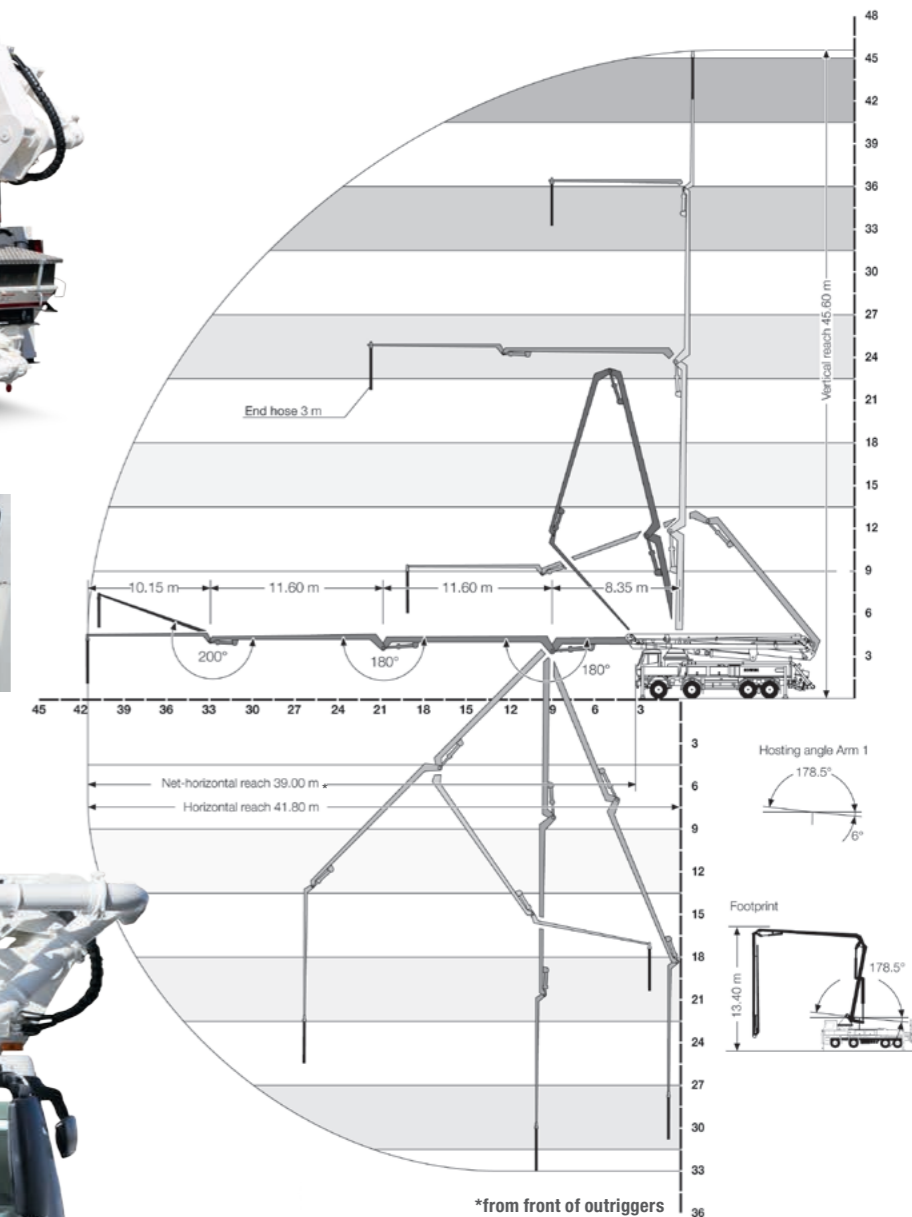


Open hydraulic system

The open hydraulic system of the S 46 SX converts the engine power efficiently into pump power with little loss. Thus, the usual practice output rates can be realized with a fuel-saving engine speed of just over 1000 rpm.



S 46 SX Truck-mounted concrete pump



Concrete valve

The legendary low wear ROCK valve with its optimal geometry for low-friction concrete flow ensures low service and operating costs. Being fast and easy to clean, the S 46 SX is quickly ready for the next job.



Supply control

The water box can be filled and emptied, and the water pump, agitator, spray hose, high pressure cleaner and compressor, all controlled via the standardised supply control. This is the standard for all SCHWING truck-mounted concrete pumps for greater clarity and ease of operation.



Remote control SC 30

The light weight, easy to use and comfortable SC 30 helps minimise fatigue, allowing the operator to focus on the job for extended periods. The powerful batteries guarantee an operating time of at least 8 hours.



SX outriggers

The SX outriggers developed by SCHWING combine high torsional rigidity and excellent stability with minimum space requirement. The protected piston rod and internally laid hydraulic lines prevent damage and reduce service costs.



Vector control

The machine operator can inspect machine data, operating conditions and settings on S 46 SX, changing various parameters, all through the intuitive VECTOR control. The integrated diagnostic system ensures safe operation and also reminds the operator when maintenance is necessary.

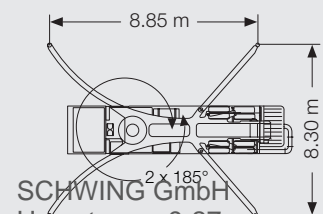


S 46 SX Truck-mounted concrete pump



Technical data

| Performance | | | | |
|--------------------------------|-------------------|----------------------------------|---------------|---------------|
| Pump kit | | P 2023-110/75 | P 2023-110/75 | P 2525-120/85 |
| Drive | l/min | 535 | 636 | 636 |
| Delivery cylinders | mm | 230 x 2,000 | 230 x 2,000 | 250 x 2,500 |
| Concrete output max. | m ³ /h | 136 | 161 | 162 |
| Pressure on concrete max. | bar | 85 | 85 | 85 |
| Stroke rate max. | 1/min. | 27 | 32 | 22 |
| Concrete valve | | B-ROCK | B-ROCK | B-ROCK |
| Hydraulic system | | | | |
| Design | | open system | | |
| Hydraulic tank | l | 465 | | |
| Boom | | 46 R | | |
| Delivery line | | DN 125 | | |
| Length of end hose | m | 3.00 | | |
| Vertical reach | m | 45.60 | | |
| Reach depth | m | 32.30 | | |
| Horizontal reach | m | 41.80 | | |
| Net horizontal reach | m | 39.00 (from front of outriggers) | | |
| Number of boom sections | | 4 | | |
| Height of the inflexion points | m | 4.90 / 13.20 / 24.80 / 36.40 | | |
| Slewing range | | 2 x 185° | | |
| Folding height | m | 13.40 | | |
| Support | | | | |
| Outrigger width, front | m | 8.30 | | |
| Outrigger width, rear | m | 8.30 | | |
| Outrigger load, front | kN | 260 | | |
| Outrigger load, rear | kN | 250 | | |



SCHWING GmbH
 Heerstrasse 9-27
 44653 Herne, Germany
 Phone +98 021 - 224 286 75-8
 Fax +98 021 - 224 286 78
 @mr.pump_iran
 www.saghargostar-co.ir

Stetter GmbH
 Dr.-Karl-Lenz-Strasse 70 · 87700 Memmingen, Germany
 Fon +49 83 31 - 78-0 · Fax +49 83 31 - 78 275
 www.schwing-stetter.com · info@stetter.de

SCHWING concrete pumps. Efficiency as standard.



SCHWING GmbH
 Heerstrasse 9-27 · 44653 Herne, Germany
 Fon +49 23 25 - 987-0 · Fax +49 23 25 - 72922
 www.schwing-stetter.com · info@schwing.de